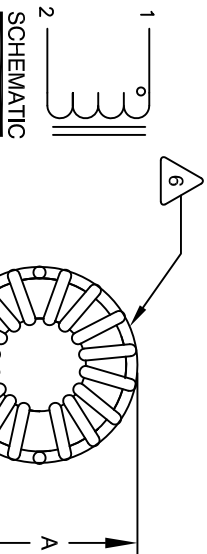


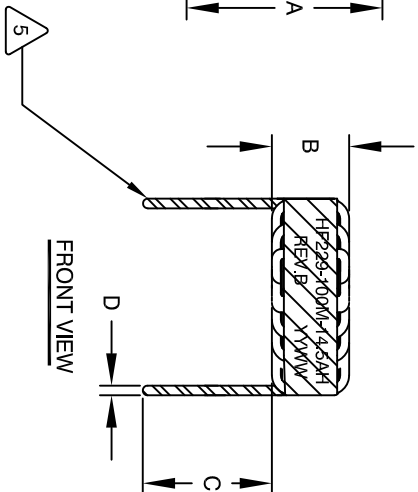
The information contained in this drawing is the sole property of CMS Coil Winding Specialist. Any reproduction in part or whole without written permission of CMS Coil Winding Specialist is prohibited.

DIMENSIONAL TOLERANCES INCHES (MM)					
A	B	C	D	X	
MAX	MAX	TYP	REF	REF	
1.10 [27.94]	0.48 [12.10]	0.50 [12.70]		1.05 [26.67]	

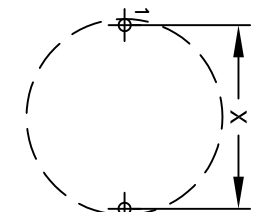
REVISION HISTORY			
REV	ECN	DESCRIPTION	SIGN & DATE
			BY DATE CHK DATE
A	—	PRODUCTION RELEASE	TDK 2/09/04 JLAU 2/9/04
B	—	UPDATED SPEC.	TN 07/13/2020 JL 07/13/2020



BOTTOM VIEW



FRONT VIEW



MOUNTING HOLES PATTERN

DC BIAS TABLE	
DC BIAS (AMP)	L@ 1KHz (REF)
0	9.7uH
1	9.6uH
2	9.6uH
4	9.5uH
6	9.4uH
8	9.4uH
10	9.2uH
12	9.2uH
14	9.0uH
14.5	9.0uH

- BUILD TO ROHS COMPLIANCE AND LEAD FREE.
- USING A PERMANENT MARKING METHOD
- MARK PART NUMBER, REVISION AND DATE CODE
- WRAP INDUCTOR WITH 3M # 79 OR EQUAL

- (I.E. COIL MUST REST FLAT ON PCB). LEADS MUST BE TANGENT TO THE CORE
- REMOVE INSULATION AND TIN LEADS 0.5 INCH, FLUSH WITH THE COIL EDGE
- WIND COILS EVENLY SPACED AROUND THE CORE
- CONSTRUCTION:

- THESE SPECIFICATIONS ARE BASED ON LOW RIPPLE CURRENT
- WEIGHT: 50 GRAMS TYPICAL
- SRF = GREATER THAN 10MHZ
- RECOMMENDED AMBIENT OPERATING TEMP: -55°C TO 180°C
- HI-POT TEST FOR WINDING TO CORE ISOLATION = 1250VDC, 5 SEC.
- INDUCTOR CURRENT RATING : 14.5 AMPS, 40°C TEMP. RISE WITH SOME AIR FLOW
- DCR = 8 MILLI-OHMS MAX.
- INDUCTOR DC BIAS: SEE TABLE ON THE RIGHT
- INDUCTANCE = 10uH ±10% @ 0 AMP DC BIAS, 1.0 KHz, 250mV
- SPECIFICATIONS: @ 25°C:

- WIRE: UL RECOGNIZED 200°C RATED MAGNET WIRE
- CORE: POWDERED TOROIDAL CORE, CMS BYTEMARK OR OTHER APPROVED PART
- MATERIAL: UL RECOGNIZED 94V-0 FOR FLAMMABILITY, RATING CLASS B (130°C MIN.) REQUIRED
- ANY TOLERANCE. THIS DIM. CAN VARY A LITTLE FROM PART TO PART.
- "TYP" IN DIM. TABLE REFERS TO A NON-CRITICAL TYPICAL (AVERAGE) DIM. WITHOUT
- NOTES: UNLESS OTHERWISE STATED, READ NOTES FROM BOTTOM UP.
- CAGE CODE: 5DME2

CODE		MFG. P/N		DESCRIPTION		ITEM NO.
IDENT						
PARTS LIST						
AUTOCAD						
SOLIDWORKS						
SIGN						
DATE						
TDK						
2/8/04						
2/9/04						
ENGR.						
KSUM						
3/5/04						
APPR.						
JLAU						
3/6/04						
DO NOT SCALE DRAWING						
UNLESS OTHERWISE SPECIFIED						
DIMENSIONING AND TOLERANCE PER ANSI Y14.5M						
ALL DIMENSIONS ARE IN INCHES						
AND [MILLIMETERS]						
TOLERANCE INCHES:						
.XXX±.005 .XX±.015 .X±.030						
TOLERANCE METRICS:						
.XXX±.127 .XX±.38 .X±.076						
ANGLE PROJECTION						
DO NOT SCALE DRAWING						
TITLE: TOROIDAL POWER INDUCTOR						
10uH, 14.5 Amps, Horizontal						
SIZE (ING. NO.)						
B HF229-100M-14.5AH						
SCALE						
2=1						
SHEET 1 OF 1						